

# ➔ TRIMMER IDEAL 1058

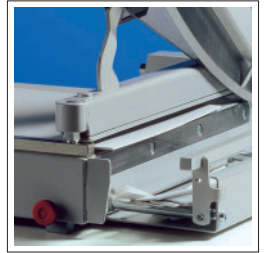
## PROFESSIONAL TRIMMER WITH MAXIMUM FEATURES AND 580 MM CUTTING LENGTH

Resharpenable, high-quality blade set made of "Solingen steel" | solid manual clamp for variable pressure | precision side lay with measuring scale (mm/inches) and adjustable backgauge | lockable front gauge with integrated narrow strip cutting device for cutting of strips as small as one mm | the front gauge is adjustable via a calibrated rotary knob | fold-away paper supports on front gauge | standard paper sizes indicated on the table | automatic safety guard made from transparent, unbreakable Lexan® (guard rises and falls with the movement of the blade) | solid cast aluminium blade mounting bracket with double pivot bearings for blade axle | solid all-metal construction

Cutting length 580 mm, Dimensions (H x W x D): 260 x 410 x 790 mm, Weight: 14 kg

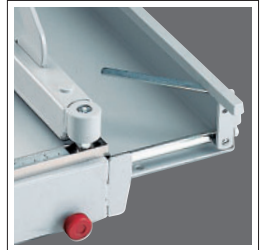


### FRONT GAUGE



The front gauge with integrated narrow strip cutting device is positioned via a calibrated rotary knob.

### PAPER SUPPORTS



Fold-away paper supports on the front gauge allow precise aligning of the paper for exact cuts.

### ➔ IDEAL 1058

Cutting length	580 mm
Cutting capacity	40 sheets*
Table size, W x D	356 x 604 mm
Format indications	A4 - A6
Measuring scale	mm/inches

\* paper 70 g/sqm