

➔ HARD DRIVE PUNCH IDEAL 0101 HDP

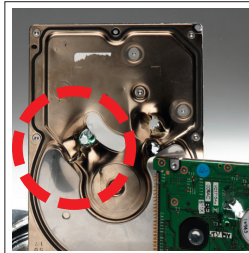
THE IDEAL SOLUTION FOR MAKING DISCARDED HARD DRIVES FROM PERSONAL COMPUTERS, NOTEBOOKS, PRINTERS AND COPIERS UNUSABLE.

At the touch of a button, the IDEAL 0101 HDP punches a hole completely through the hard drive, rendering the stored data inaccessible | suitable for 3.5" or 2.5" hard drives (single feeding) | adjustable feed chute constructed of high quality steel | handy slide lever for easy selection of hard drive size (3.5" or 2.5") | transparent safety flap on the feed chute made of unbreakable plastic | punching die made from hardened, nickel-plated steel | sturdy steel endplate | LEDs for illuminating the feed chute during the punching process | slider mechanism for unloading punching compartment | destroyed hard drives drop into a sturdy plastic bin inside the cabinet | high-quality wooden cabinet with front opening door | SPS (Safety Protection System) safety package: electronically controlled, hinged safety flap for the feed opening; EASY_SWITCH multifunction control element for start and stop indicates the operational status of the machine with varying colour codes and back-lit symbols; jam protection for punching die with automatic reverse; automatic stop after the punching process; weight sensor for automatic shut-off when the collection bin is full; electronic door protection via a magnetic proximity switch; double motor protection | quiet and powerful 640 watt single phase motor rated for continuous operation | sturdy "Twin Drive System" with fully enclosed gear box housing | mobile on castors

Dimensions (H x W x D): 850 x 495 x 470 mm, Weight: 63 kg



THE RESULT



By punching a hole through the hard drive, all components (metal housing, disk and electronic parts) are irreparably damaged and the data rendered inaccessible.

ADJUSTABLE FEED CHUTE



A convenient slide lever easily adjusts the feed chute to accommodate the two most common hard drive sizes (3.5" and 2.5").

EASY_SWITCH



Intuitive operation: intelligent multifunction control element uses colour codes and back-lit symbols to indicate the operational status of the hard drive punch.

➔ IDEAL 0101 HDP

Hard disk sizes	3.5" or 2.5"
Punching cycle	15 seconds
Power connection	230V/50Hz ¹
Motor capacity	640 Watt

¹ other voltages available